

SENTRY DCCP REBOILER

Single Line Conditioning Modules

SAMPLE CONDITIONING

The Sentry® DCCP Reboiler is designed to optimize the analytical results for degassed cation conductivity. First, the panel uses an oversized heater and baffled vapor discharge chamber, which assures complete boiling and provides a steam blanket over the sample to eliminate any sample contamination that might occur due to discharge piping backflow. The vapor is then condensed and removed via a vent drain. After the sample is degassed, it is cooled with an additional sample cooler so that chemistry deviations in analyzer temperature compensation curves are reduced.

MODEL

DCCP

BENEFITS

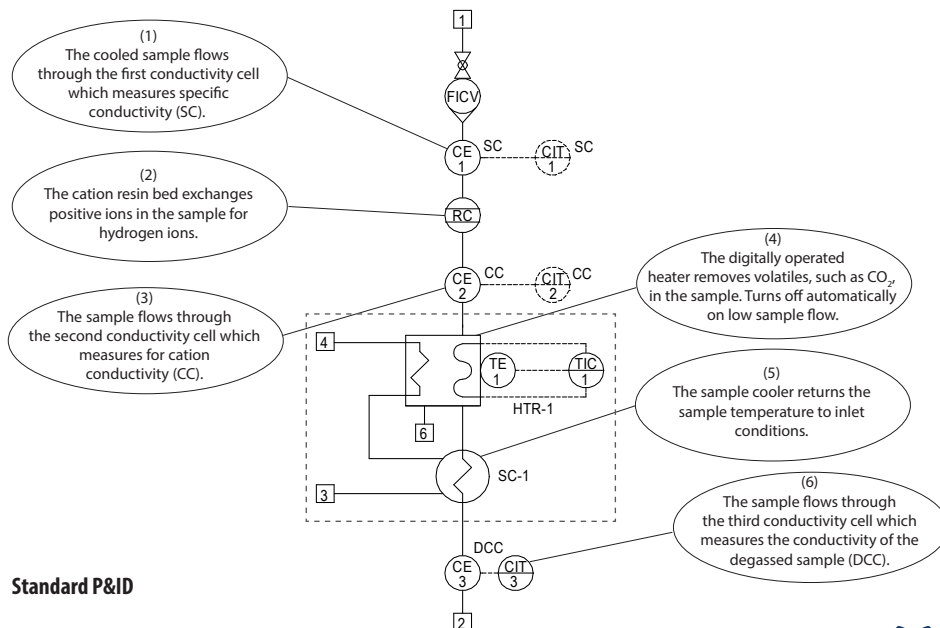
The Sentry DCCP reboiler is a complete panel that efficiently removes CO₂ from the sample to measure degassed cation conductivity. The base unit is designed to be used with customer supplied degassed cation conductivity (DCC) cell and instrument. The unit can also be supplied with specific (SC), cation (CC), and degassed cation (DCC) conductivity cells and analyzers for a complete and compact cycle chemistry validation solution. A wide variety of analyzer makes and models are available.

FEATURES

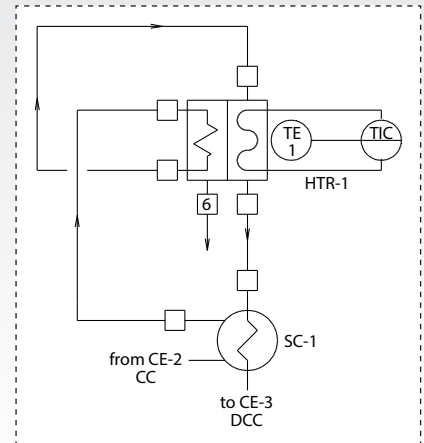
- Capable of measuring specific conductivity (SC), cation conductivity (CC) and degassed cation conductivity (DCC)
- No cooling water required with regenerative cooling option
- Operates in accordance with ASTM D4519
- Sample cooler ensures CC and DCC probes receive identical sample temperatures, eliminating errors
- Compact wall-mount design
- Surface mount, backplate option
- CE, SGS and CSA available



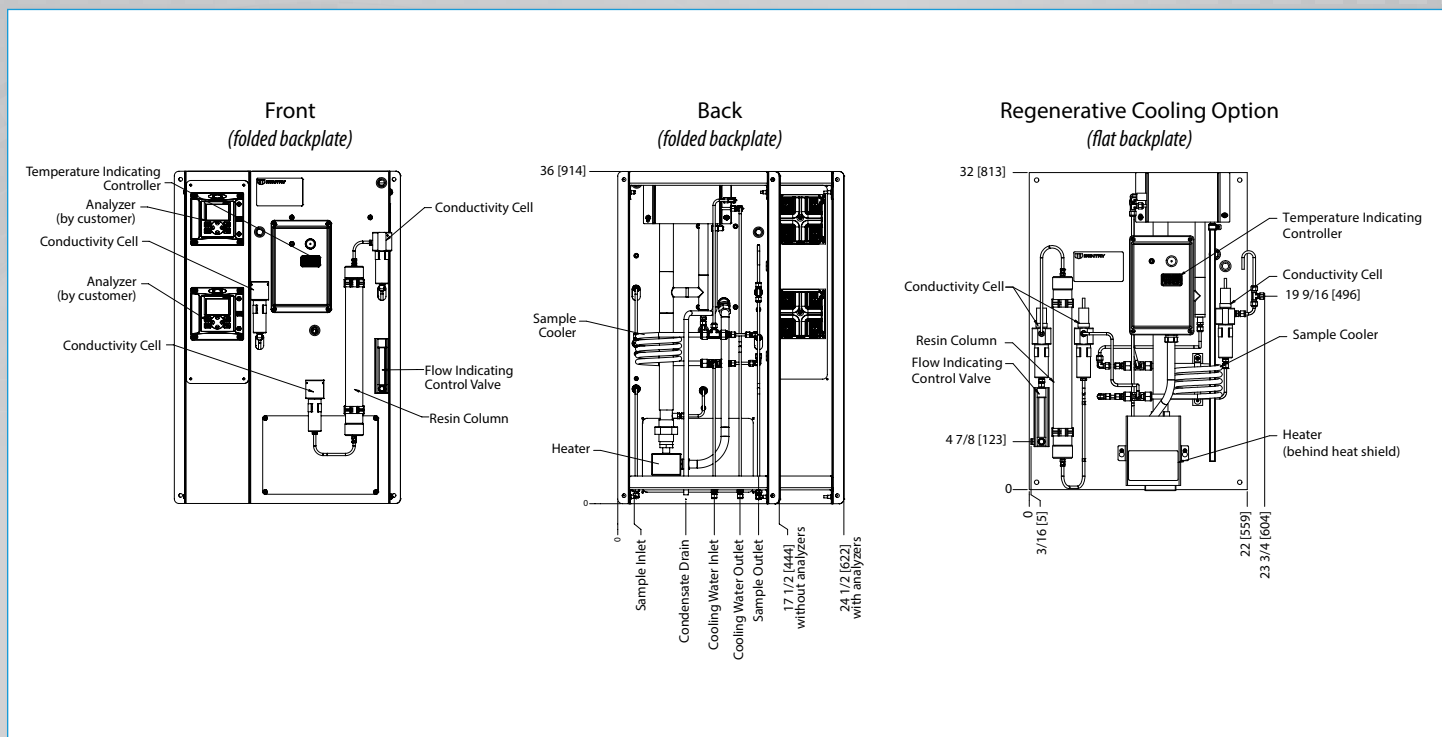
DCCP Reboiler with analyzer panel



Available Option: No designated cooling water



Sample. Monitor. Measure.
SENTRY
Any Application. Anywhere.



SPECIFICATIONS					
backplate	input power	cell holders & resin column	flow indicator with valve	cells/analyzers	cooling water
0 = Folded 1 = Flat	1 = 110-120 VAC 2 = 220-240 VAC	0 = None 1 = DCC 2 = CC & DCC (with RC-100) 3 = SC, CC & DCC (with RC-100) 4 = DCC (with RC-100)	0 = none 1 = yes	0 = customer supplied 1 = supplied by Sentry Equipment 2 = customer supplied; panel space provided by Sentry Equipment	0 = designated 1 = regenerative
dimensions	flat backplate: 32 x 22 x 11 in (81 x 56 x 28 cm) folded backplate without analyzer side plate: 36 x 17.5 x 15 in (91 x 44.5 x 38 cm) folded backplate with analyzer side plate: 36 x 24.5 x 15 in (91 x 62 x 38 cm)				
weight	61 lb (28 kg)				
pressure rating	100 psig (7 barg)				
temperature rating	130°F (54°C) with RC-100 before degas				
sample flow	100-200 cc/min				
sample inlet connection	1/4 in compression fitting				
sample outlet connection	1/4 in compression fitting				
sample cooler type	DTC-DCCP				
cooler cooling water connections	1/4 in compression fitting				
cooling water consumption	0.2 gpm (0.8 Lpm) at 22°C (71.6°F)				
power consumption	1.6 KVA				
cell holders (optional)	3/4 in FNPT, 316 SS				

sentry-equip.com

966 Blue Ribbon Circle North, Oconomowoc, WI 53066 U.S.A. | +1-262-567-7256 | sales@sentry-equip.com

© 2019 Sentry Equipment Corp. All rights reserved. All product and company names are property of their respective owners. It is solely the responsibility of end users, through their own testing and analysis, to select products and materials suitable for their specific application requirements, ensure they are properly installed, safely applied and properly maintained, and to limit their use to their intended purpose. Improper selection, installation or use may result in personal injury or property damage.

S-SW-SPS-00149-17 07-19



COMPANY WITH
QUALITY SYSTEM
CERTIFIED BY DNV GL
= ISO 9001 =