

Application Guide - Saf-T-Vise Products

Customer Data:

Date:
 Company:
 Contact Name:
 E-mail:

Company Phone:
 Company Address:
 City, State ZIP:
 Country:

Project Information:

Project Name:
 End Use Destination:

Pricing:

Budgetary

Firm

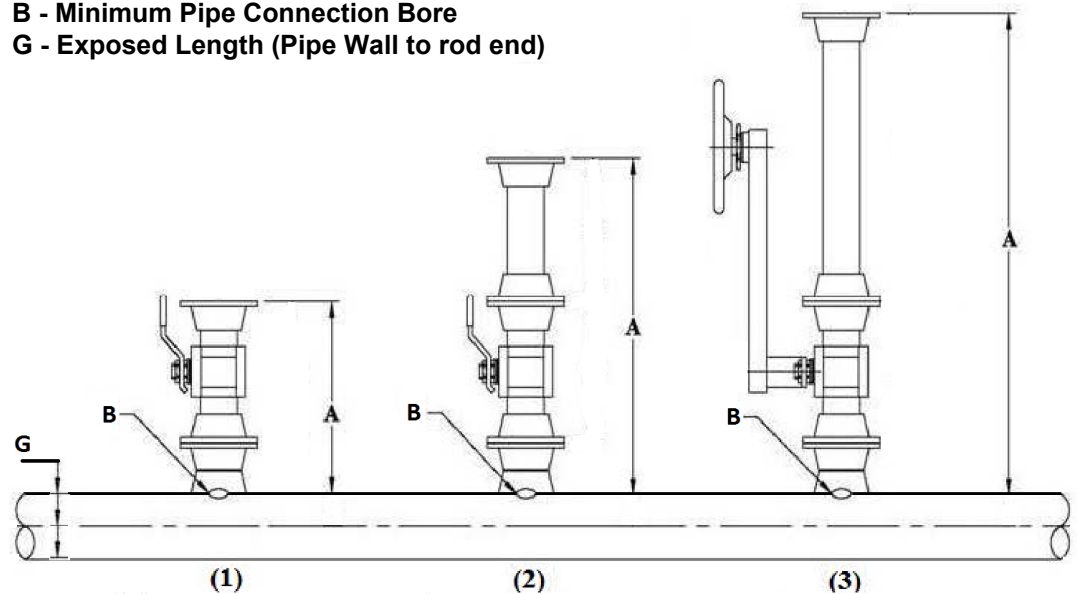
SI Units

Dimensions (mm)
 Velocity (m/s)
 Density (kg/m³)
 Temp. (°C)
 Pressure (Bar)
 Mass Flow (kg/hr)

English Units

Dimensions (in)
 Velocity (ft/s)
 Density (lbs/ft³)
 Temp. (°F)
 Pressure (psi)
 Mass Flow (lbs/hr)

A - Dimension from Top of Connection to Top of Pipe
B - Minimum Pipe Connection Bore
G - Exposed Length (Pipe Wall to rod end)



Please reference the drawing on first page for the following:

- A. Dimension A:
- B. Type of Valve Bore: Regular Port Full Port
- C. Dimension B-Min. Bore Size:
- D. Connection Size:

Please Note: Flanged Units are Non-Returnable

E. Nominal Pipe Outside Diameter:

F. Pipe Wall Thickness:

G. Exposed Length:

Process Data

- i. Process Fluid Velocity:
- ii. Density of Process Fluid:
- iii. Process Fluid Temperature:
- iv. Process Fluid Pressure:
- v. Mass Flow Rate:
- vi. Specific Gravity (°API)

Application Tool Required

- i. Coupon Holder
- ii. Quill (45° Tip)
- iii. Atomizer

(Choose if Nozzle Provided and Note Type in Notes)

NOTES: (If monitoring with a coupon, please indicate whether in the center or bottom of the pipe)

Planned Chemical Rate:

Type of Chemical Mitigation:

Corrosion Inhibitor H2S Mitigation

Methanol Injection Other

Requested Tool Model

Quantity: