

SENTRY D2 SAMPLER

Strip Samplers

AUTOMATIC SAMPLING

The Sentry® D2 automatic strip sampler automates sampling of either free-flowing or non free-flowing solid and powder materials such as pellets, kibble, powders, flakes and granules in gravity chutes and hoppers.

The Sentry D2 strip sampler captures a sample across the width of a process stream, and is used in situations where product segregation exists. Product characteristics, such as particle size, are not affected by the sampler, and sample size can be changed at the sampler controller.

The Sentry D2 sampler collects a sample when a solenoid-operated actuator rotates a slotted sample tube into the product flow, taking a sample. Simultaneously, a motor-driven auger conveys the product to the discharge point.

MODELS

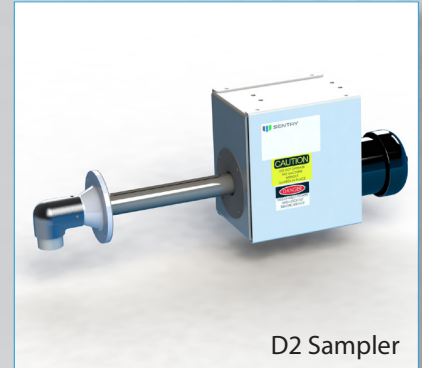
D2 | D2 SSD

BENEFITS

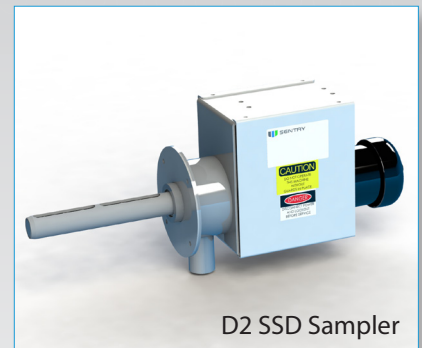
With representative sampling, characteristics of each sample match that of the entire lot or batch – so samples are repeatable, leading to accurate sample analysis data. Automatic sampling ensures a sample can be easily and safely obtained with no need for direct human interface or interference. This ensures sample integrity as well as operator safety.

FEATURES

- Customized to meet various application needs
- Same-side discharge (SSD) model for ease of installation where there are space constraints
- Close tolerance between the auger and tube assures self-cleaning to help prevent cross-contamination
- Same-side discharge model is easily disassembled for cleaning.
- Larger diameter augers available for larger particle sizes
- Insertion lengths starting from 6 inches (152 mm)
- Product contact materials are 300 series stainless steel; food grade configuration available
- White nitrile seals or gaskets
- Low height requirements
- CE and ATEX compliant models available
- Pneumatic or electric actuation options
- Includes air filter, pressure regulator and gauge where applicable
- Optional release coating to ensure a non-stick surface
- QPQ hardening of contact surfaces available to protect against wear and abrasion
- Explosion proof (XP) motor available
- Custom mounting adapters for round, square or other shaped chutes or pipes
- Pre-plumbed air filter, pressure regulator and solenoid valve available



D2 Sampler

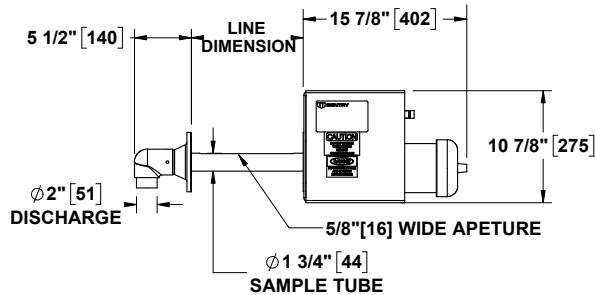
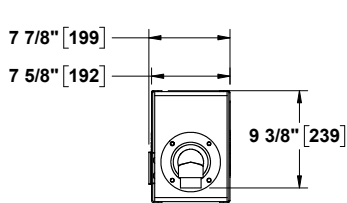


D2 SSD Sampler

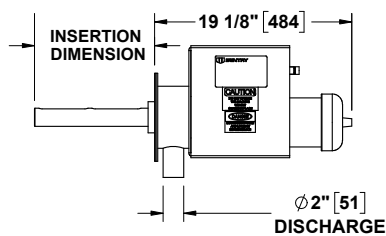
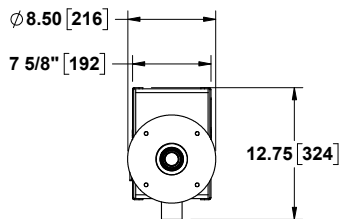


Sample. Monitor. Measure.
SENTRY
Any Application. Anywhere.

MODEL D2



MODEL D2 SSD



SPECIFICATIONS

materials	300 series stainless steel, white nitrile, acetal, aluminum actuator
particle size	10 µm - 1/4 in (6 mm) (standard tube size)
motor	1/6 HP gearmotor, 90 RPM, 115/230/1ph/60 Hz, 110/220/1ph/50 Hz TEFC
electrical requirements	115/230 V, 1 ph, 60 Hz or 110/220 V, 1 ph, 50 Hz
temperature rating	-20 to 180°F (-29 to 82°C)
suggested connection to sample discharge	rigid metal or flexible tubing to a collection container or indexing cabinet
recommended sampler location	gravity chutes and hoppers
quantity of sample	24 cc per revolution max.
collection containers	PET jar, 304 stainless steel jar, bag
pressure rating	ATM
shipping weight	approx. 60 lb (27 kg)

sentry-equip.com

966 Blue Ribbon Circle North, Oconomowoc, WI 53066 U.S.A. | +1-262-567-7256 | sales@sentry-equip.com



© 2018 Sentry Equipment Corp. All rights reserved. All product and company names are property of their respective owners. It is solely the responsibility of end users, through their own testing and analysis, to select products and materials suitable for their specific application requirements, ensure they are properly installed, safely applied and properly maintained, and to limit their use to their intended purpose. Improper selection, installation or use may result in personal injury or property damage.

S-AS-SPS-00168-7 08-18

COMPANY WITH
QUALITY SYSTEM
CERTIFIED BY DNV GL
= ISO 9001 =