



MODEL RB Automatic Sampler

**For Free-flowing and
Non Free-flowing
Materials**



**MODEL RB
AUTOMATIC SAMPLER**

Features

- Close tolerance (0.003"/0.0008 cm) between the sample tube and auger allows product cleanout
- Tube retracts from the line so there is no restriction in the product flow
- Product contact materials are 304 SS and Teflon® seals

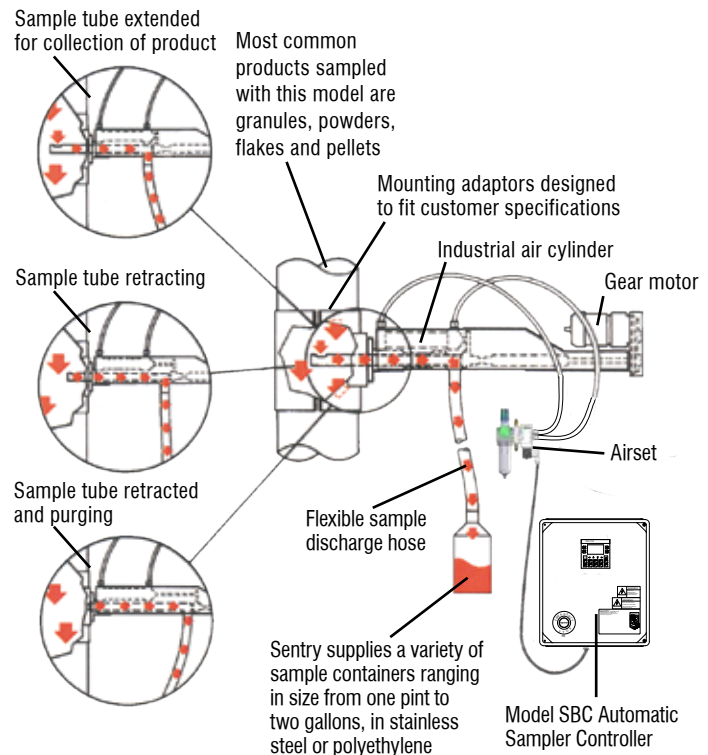
Options

- Custom mounting adapters for round, conical, angular and other configurations
- Pressurized containers for pneumatic lines up to 15 psig
- Custom construction materials
- Available in stroke lengths from 4-8" (10-20.3 cm)
- Nickel-impregnated Teflon® creates a non-stick surface
- Hardening treatments protect against wear and abrasion

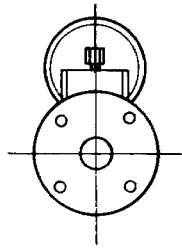
Description

The Model RB is designed for automatic strip sampling of free-flowing and non-free-flowing materials (granules, powders, flakes and pellets) from spouts, hoppers, transfer chutes and pneumatic conveying lines up to 15 psig. Allows product sample to be continuously discharged while sample tube is fully extended.

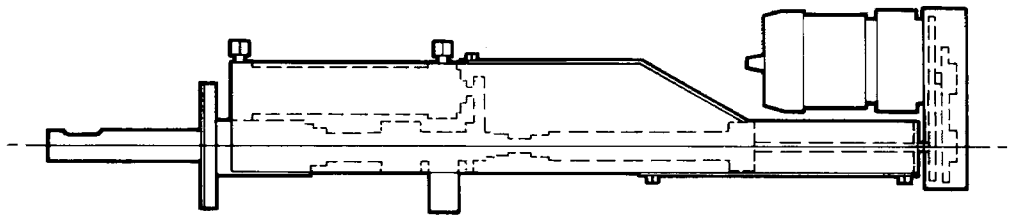
A solenoid-controlled air cylinder extends a slotted sampling tube into the process line. A representative sample collects by a gearmotor-driven auger to the discharge point.



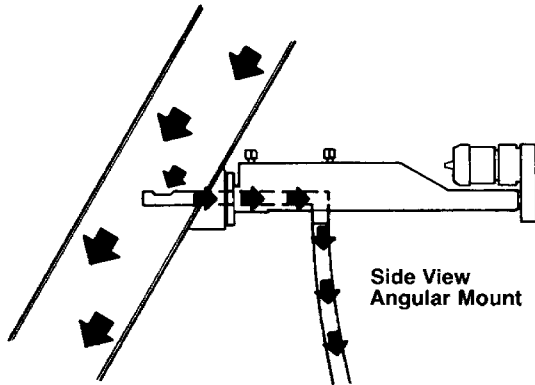
MODEL RB TECHNICAL DATA



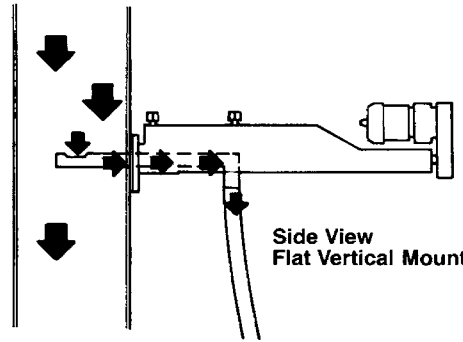
FRONT VIEW



SIDE VIEW



Side View
Angular Mount



Side View
Flat Vertical Mount

SPECIFICATIONS

Basic Electrical Requirements	115 VAC, single phase, 60 Hz; control box fused to 2 amps; optional 220 VAC, single phase, 50/60 Hz; garmotor – 1/8 hp or 1/15 hp, 220 VAC, single phase, 50/60 Hz @ 30 rpm; explosion-proof – 1/20 hp, 115 VAC, single phase, 60 Hz 92:1 ratio @ 19 rpm
Air Requirements	80 psig, 1.5 ft ³ /cycle (5.5 barg, 42.5 l/cycle)
Quantity of Sample	determined by flow rate, aperture size and time in line
Product Size	10 μm to 1/4" (6 mm); larger sizes upon request
Recommended Location of Sampler	vertical gravity lines
Suggested Connection to Collection Point	rigid metal or flexible tubing to a container or indexing cabinet
Materials of Construction	aluminum housing and stainless steel sample tube
Temperature Range	up to 250°F (121°C)

NOTE: Teflon is a registered trademark of E. I. Du Pont de Nemours and Company.

WARNING

It is solely the responsibility of the end-user, through its own analysis and testing, to select products and materials suitable for their specific application requirements, ensure they are properly installed, safely applied, properly maintained, and limit their use to their intended purpose. Improper selection, installation, or use may result in personal injury or property damage.



SENTRY EQUIPMENT CORP

966 Blue Ribbon Circle North
Oconomowoc, WI 53066 USA
Tel: 262-567-7256 • Fax: 262-567-4523

E-mail:
sales@sentry-equip.com

Website:
www.sentry-equip.com



For further information, contact: