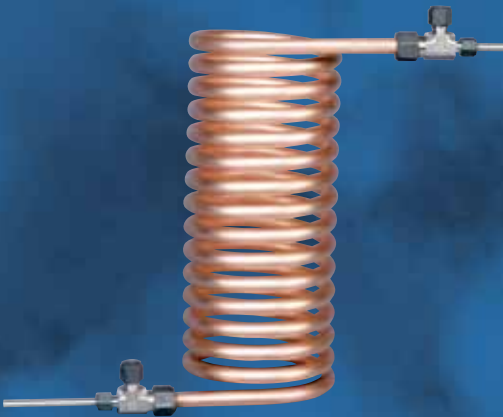
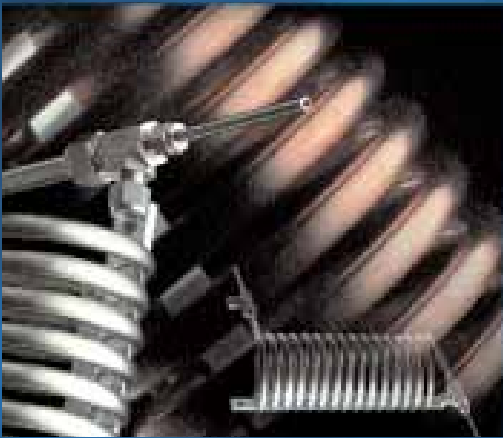




Dual Tube Coils

High Efficiency Tube-in-Tube Heat Exchangers

WATER • STEAM • PROCESS LIQUID/GAS



MORE THAN 85 YEARS OF
SAMPLING EXPERIENCE

www.sentry-equip.com



HIGH PERFORMANCE TUBE-IN-TUBE HEAT EXCHANGER FOR A VARIETY OF APPLICATIONS

Sentry Dual Tube Coils (DTC) are spirally wound, full counter flow heat exchangers well suited for a variety of applications where low flow rates of high temperature and/or high pressure fluids need cooling or heating.

Rugged and Adaptable Design

The sturdy tube within a tube concept uses heavy duty terminal fittings to provide for a plain tube end interface for the inner tube and a compression connection for the outer tube. The plain end of the inner tube is easily adapted to a variety of connections including compression, threaded, socket weld, sanitary clamp, etc. The tube within a tube design also provides for high pressure/temperature capabilities on both sides of the heat exchanger, giving greater application flexibility.

Single Continuous Tube

The single continuous inner tube increases reliability and cleanliness and allows the unit to be completely drainable. In conjunction with appropriate end fittings and optional inner tube electropolishing, sanitary requirements can be met.

MATERIALS TO MEET ANY NEED

- 300 & 400 grade stainless steels
- Copper & copper alloys
- Nickel alloys
- Titanium
- Zirconium
- PTFE

Wide Variety of Materials Available

Stock materials include Copper, 316 Stainless Steel and Inconel® Hastelloy® (various grades), Titanium, Zirconium, PTFE and a variety of other nickel and stainless steel alloys are available.

Simple Installation

A two-hole mounting bracket permits the DTC to be easily mounted in a variety of locations & orientations.

Custom configurations and options

Standard sizes for 1/4", 3/8" and 1/2" inner tubes are available with a variety of materials, physical arrangements, coil lengths, and end connections. Custom inner tube sizes are available up to 1". Sanitary units are available in all sizes.

CONTINUOUS TUBE-IN-TUBE

- Fully drainable inner and outer coil
- Spiral wound for maximum counterflow efficiency
- Constant fluid velocity
- No dead spots or crevices
- Excellent for multi-phase/multi-component fluids & slurries
- Highly resistant to thermal and hydraulic shock

DTC - Just One of a Broad Line of Compact Heat Exchangers By Sentry

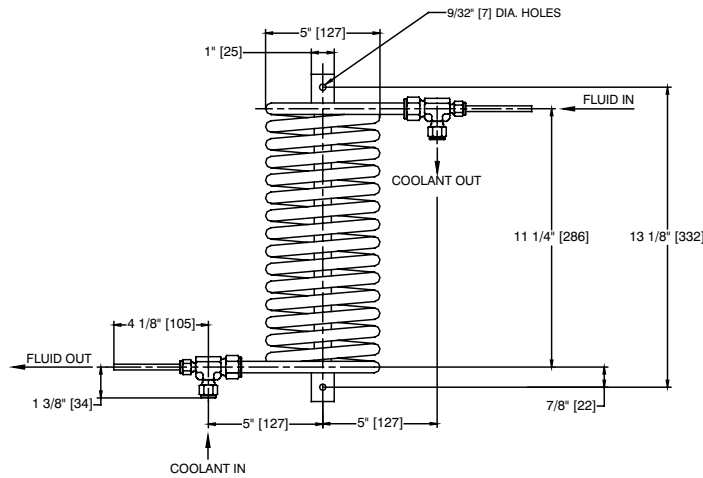
To learn more about Sentry Equipment and download referenced bulletins, visit us at:

www.sentry-equip.com

DTC-4

Specifications - 4 Series

Model No.	Inner Tube Design	Outer Design	Inner Tube Material	Outer Tube Material	H.T. Area	Weight	Part Number
DTC-CUA/CUA-4-1-1	2000 psig @300°F 137 bar @148°C	700 psig @300°F 48 bar @148°C	1/4"O.D. Copper	1/2"O.D. Copper	1.26 ft ² 0.12 m ²	12 lbs 5.5 kg	7-02671A
DTC-SSA/CUA-4-1-1	4900 psig @1000°F 337 bar @537°C	700 psig @300°F 48 bar @148°C	1/4"O.D. 316SS	1/2"O.D. Copper	1.26 ft ² 0.12 m ²	12 lbs 5.5 kg	7-02671B
DTC-IN1/CUA-4-1-1	5450 psig @1100°F 375 bar @593°C	700 psig @300°F 48 bar @148°C	1/4"O.D. Inconel	1/2"O.D. Copper	1.26 ft ² 0.12 m ²	12 lbs 5.5 kg	7-02671C
DTC-SSA/SSB-4-1-1	4900 psig @1000°F 337 bar @537°C	2300 psig @1000°F 158 bar @537°C	1/4"O.D. 316SS	1/2"O.D. 316SS	1.26 ft ² 0.12 m ²	12 lbs 5.5 kg	7-02671D
DTC-IN1/SSB-4-1-1	5450 psig @1100°F 375 bar @593°C	2300 psig @1000°F 158 bar @537°C	1/4"O.D. Inconel	1/2"O.D. 316SS	1.26 ft ² 0.12 m ²	12 lbs 5.5 kg	7-02671E



DTC - 4 - Notes

1. DTC Model Numbers - DTC - XXX/XXX- 4 - y - y

A **B** **C**

A Inner tube/outer tube material in a three letter format in 4 categories
 CU_ = copper & copper alloys
 SS_ = stainless steel alloys
 IN_ =nickel alloys
 XXX = Other
 Third character denotes specific details, e.g. SSA = SA249 316SS, .042 wall.

B Inner Tube end connection type

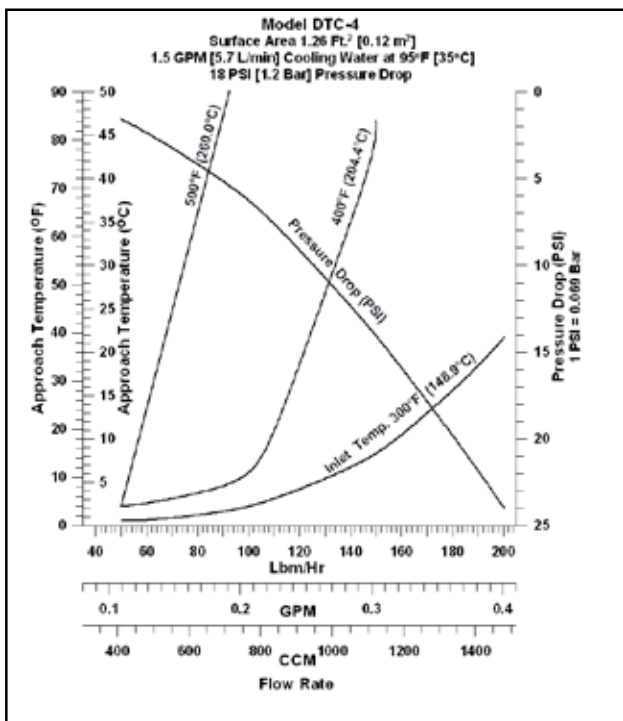
C End connection orientation

2. Customer Connections:

- 1/4" OD. inner tube (plain end)
- 3/8" O.D. coolant (compression)

3. Performance data shows approach temperature (outer tube inlet + approach temp. = inner tube outlet temp) for three inner tube inlet temperatures and various flow rates. Data based on thermal properties of water. Cooling water 95°F (35°C) @1.5 GPM (5.7 L/min). Pressure drop<18 psi (1.2 bar). Consult factory for other fluids flow, rates and pressure drops.

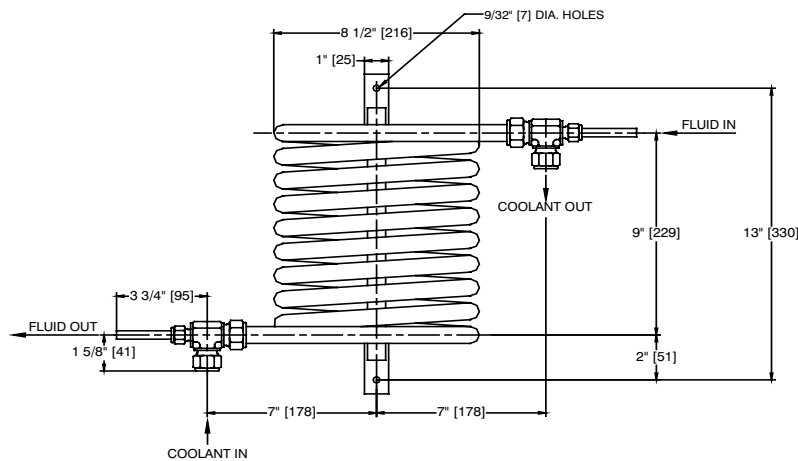
4. Dimensions for specific materials may vary.



DTC-6

Specifications - 6 Series

Model No.	Inner Tube Design	Outer Tube Design	Inner Tube Material	Outer Tube Material	H.T. Area	Part Weight	Number
DTC-CUA/CUB-6-1-1	1250 psig @300°F 86 bar @148°C	700 psig @300°F 48 bar @148°C	3/8"O.D. Copper	3/4" O.D. Copper	1.90 ft ² 0.18 m ²	16 lbs. 7.3 kg	7-02672A
DTC-SSC/CUB-6-1-1	5100 psig @1000°F 351 bar @537°C	700 psig @300°F 48 bar @148°C	3/8"O.D. 316SS	3/4" O.D. Copper	1.90 ft ² 0.18 m ²	16 lbs. 7.3 kg	7-02672B
DTC-IN1/CUB-6-1-1	3800 psig @1100°F 262 bar @593°C	700 psig @300°F 48 bar @148°C	3/8"O.D. Inconel	3/4" O.D. Copper	1.90 ft ² 0.18 m ²	16 lbs. 7.3 kg	7-02672C
DTC-SSC/SSC-6-1-1	5100 psig @1000°F 351 bar @537°C	2300 psig @1000°F 158 bar @537°C	3/8"O.D. 316SS	3/4" O.D. 316SS	1.90 ft ² 0.18 m ²	16 lbs. 7.3 kg	7-02672D
DTC-IN1/SSC-6-1-1	3800 psig @1100°F 262 bar @593°C	2300 psig @1000°F 158 bar @537°C	3/8"O.D. Inconel	3/4" O.D. 316SS	1.90 ft ² 0.18 m ²	16 lbs. 7.3 kg	7-02672E



DTC - 6 - Notes

1. DTC Model Numbers - DTC - XXX/XXX-6-y-y

A Inner tube/outer tube material in a three letter format in 4 categories
 CU_ = copper & copper alloys
 SS_ = stainless steel alloys
 IN_ = nickel alloys
 XXX = Other
 Third character denotes specific details,
 e.g. SSA = SA249 316SS,.042 wall

B Inner Tube end connection type

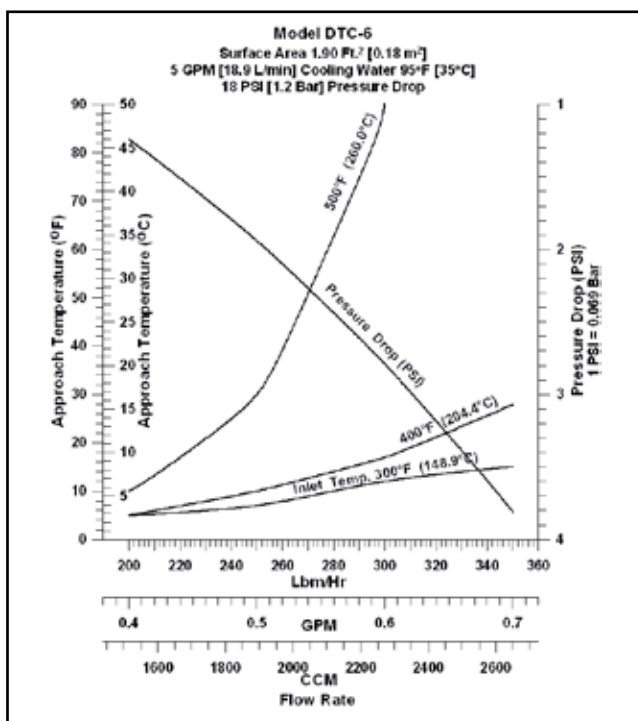
C End connection orientation

2. Customer Connections:

- 3/8" O.D. inner tube (plain end)
- 5/8" O.D. coolant (compression)

3. Performance data shows approach temperature (outer tube inlet + approach temp. = inner tube outlet temp) for three inner tube inlet temperatures and various flow rates. Data based on thermal properties of water. Cooling water 95°F (35°C) @5 GPM (18.9 L/min). Pressure drop < 18 psi (1.2 bar). Consult factory for other fluids, flow rates and pressure drops.

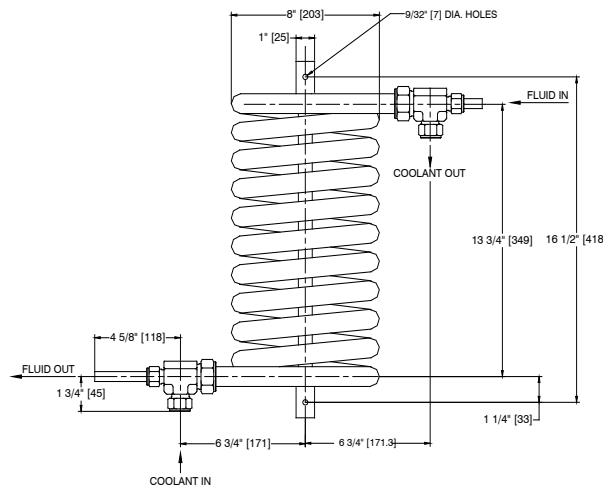
4. Dimensions for specific materials may vary.



DTC-8

Specifications - 8 Series

Model No.	Inner Tube Design	Outer Tube Design	Inner Tube Material	Outer Tube Material	H.T. Area	Weight	Part Number
DTC-CUB/CUC-8-1-1	1250 psig @300°F	700 psig @300°F	1/2"O.D.	1"O.D.	2.52 ft ²	30 lbs.	7-02673A
DTC-SSB/CUC-8-1-1	86 bar @148°C	48 bar @148°C	Copper	Copper	0.23 m ²	13.6 kg	7-02673B
DTC-IN7/CUC-8-1-1	2400 psig @1000°F	700 psig @300°F	1/2"O.D.	1"O.D.	2.52 ft ²	30 lbs.	7-02673x
DTC-IN7/CUC-8-1-1	165 bar @537°C	48 bar @148°C	316SS	Copper	0.23 m ²	13.6 kg	
DTC-SSB/SSD-8-1-1	4000 psig @900°F	700 psig @300°F	1/2"O.D.	1"O.D.	2.52 ft ²	30 lbs.	7-02673D
DTC-SSB/SSD-8-1-1	275 bar @482°C	48 bar @148°C	Inconel	Copper	0.23 m ²	13.6 kg	
DTC-IN7/SSD-8-1-1	2400 psig @1000°F	2300 psig @1000°F	1/2"O.D.	1"O.D.	2.52 ft ²	30 lbs.	7-02673Y
DTC-IN7/SSD-8-1-1	165 bar @537°C	158 bar @537°C	316SS	316SS	0.23 m ²	13.6 kg	
DTC-IN7/SSD-8-1-1	4000 psig @900°F	2300 psig @1000°F	1/2"O.D.	1"O.D.	2.52 ft ²	30 lbs.	
DTC-IN7/SSD-8-1-1	276 bar @482°C	158 bar @537°C	Inconel	316SS	0.23 m ²	13.6 kg	



DTC - 8 - Notes

1. DTC Model Numbers - DTC - XXX/XXX - 8 - y - y

A Inner tube/outer tube material in a three letter format in 4 categories
 CU_ = copper & copper alloys
 SS_ = stainless steel alloys
 IN_ = nickel alloys
 XXX = Other
 Third character denotes specific details,
 e.g. SSA = SA249 316SS, .042 wall.

B Inner Tube end connection type

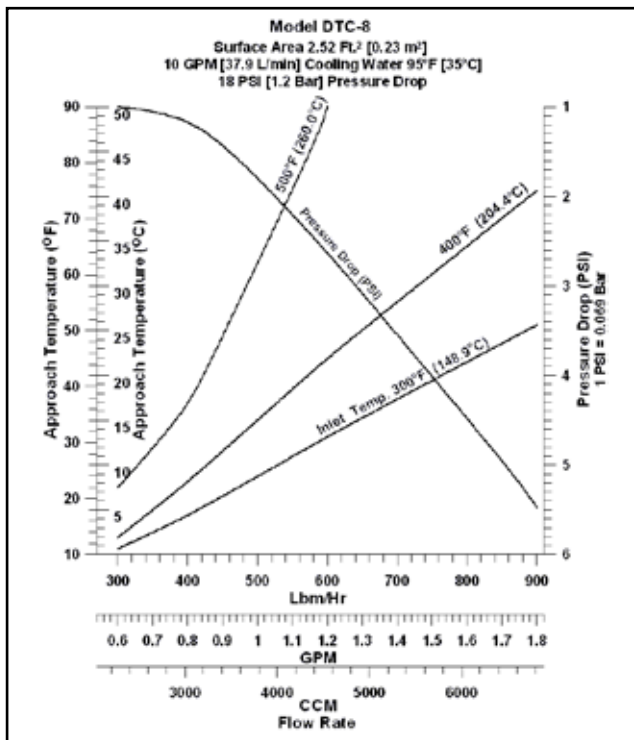
C End connection orientation

2. Customer Connections:

- 1/2" OD. inner tube (plain end)
- 3/4" O.D. coolant (compression)

3. Performance data shows approach temperature (outer tube inlet + approach temp. = inner tube outlet temp) for three inner tube inlet temperatures and various flow rates. Data based on thermal properties of water. Cooling water 95°F(35°C) @10 GPM (37.9 L/min). Pressure drop<18 psi (1.2 bar). Consult factory for other fluids, flow rates and pressure drops.

4. Dimensions for specific materials may vary.



BROAD VARIETY OF COMPACT HEAT EXCHANGERS



Sentry can provide tube-in-tube, helical coil, spiral tube, brazed/gasketed plate and special shell and tube heat exchangers in a variety of configurations.

SAMPLING COMPONENTS AND SYSTEMS



Sentry is the world leader in sampling components and systems for the power and process industries. Ask for bulletins 1.41.2 & 1.5.2 for more details.

Every Employee an Owner, Every Customer a Commitment

⚠ WARNING

It is solely the responsibility of the end-user, through its own analysis and testing, to select products and materials suitable for their specific application requirements, ensure they are properly installed, safely applied, properly maintained, and limit their use to their intended purpose. Improper selection, installation, or use may result in personal injury or property damage.



SENTRY EQUIPMENT CORP

966 Blue Ribbon Circle North
Oconomowoc, WI 53066 USA
Tel: 262-567-7256 • Fax: 262-567-4523

E-mail:
sales@sentry-equip.com

Website:
www.sentry-equip.com

QUALITY MANAGEMENT SYSTEM
CERTIFIED BY DNV
ISO 9001:2008

For further information, contact: