



FLF SAMPLE COOLER HELICAL COIL SAMPLE COOLER

Compact, efficient sample cooling for high flow gases and liquids

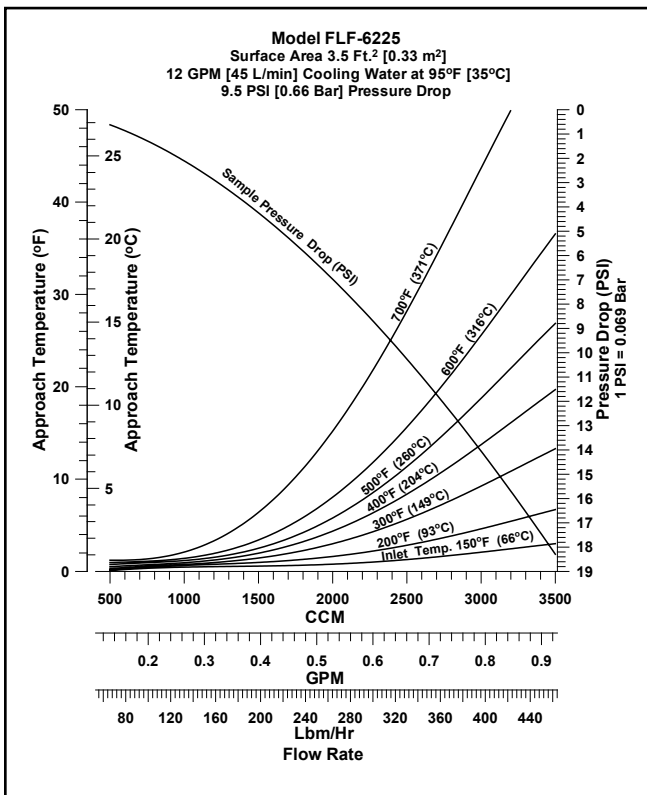
Features

- Double helical coil design
- Most efficient sample cooler available
- Minimize cooling water needs

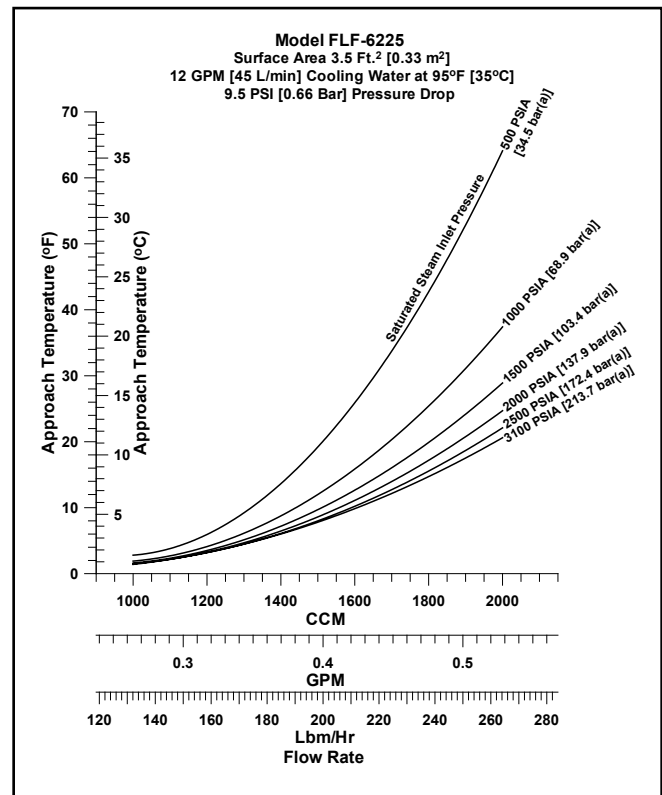
Description

The FLF series sample cooler is designed for efficient and cost effective sample cooling where higher flow or low pressure drop is required. Optimal service for flows below 3500 cc/min for both single phase and condensing heat transfer. Standard tube side materials are 316/316L SS or Alloy (Inconel®) 625 for high chloride cooling water applications. Optimized for steam condensing service.

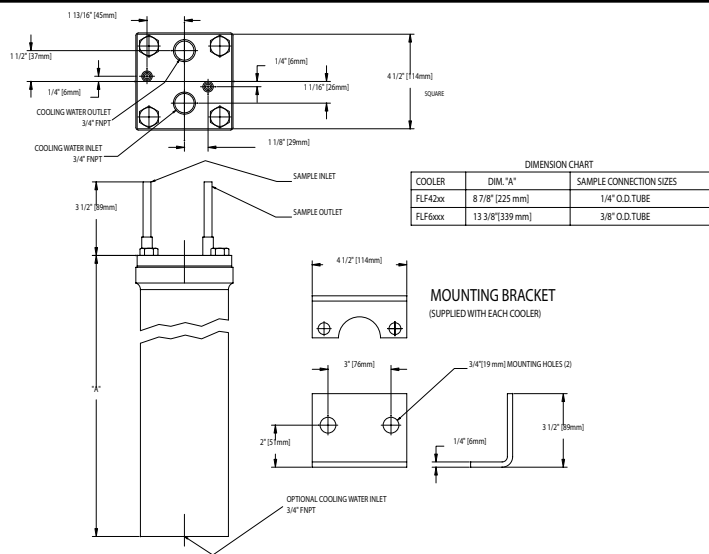
Performance Curve - Water



Performance Curve - Steam



Due to two-phase flow variability, please consult factory for pressure drop.



COOLER	DIM. "A"	SAMPLE CONNECTION SIZES
FLF42xx	8 7/8" (225 mm)	1/4" O.D. TUBE
FLF6xx	13 3/8" (339 mm)	3/8" O.D. TUBE

Specifications – FLF Series

Model No.	Shell Design	Tube Design	Tube Material	Shell Material	Area	Shipping Weight	Part Number
FLF-4225	450 psi @ 650°F 31 bar @ 343°C	5000 psi @ 1000°F 345 bar @ 537°C	316/316L SS 1/4" O.D. x 0.049"AW	304 SS	2.4 ft ² 0.22 m ²	17 lbs 7.5 kg	7-00759A
Consult Factory or see Bulletin 4.3 for performance curves							
FLF-4225U	300 psi @ 650°F 20 bar @ 343°C	4400 psi @ 1000°F 303 bar @ 537°C	316/316L SS 1/4" O.D. x 0.049"AW	304 SS	2.4 ft ² 0.22 m ²	17 lbs 7.5 kg	7-00775A
Consult Factory or see Bulletin 4.3 for performance curves							
FLF-6222	450 psi @ 650°F 31 bar @ 343°C	2485 psi @ 680°F 171 bar @ 360°C	316/316L SS 3/8" O.D. x 0.035"AW	304 SS	3.5 ft ² 0.33 m ²	21 lbs 9.5 kg	7-00760A
FLF-6225	450 psi @ 650°F 31 bar @ 343°C	5000 psi @ 1000°F 345 bar @ 537°C	316/316L SS 3/8" O.D. x 0.065"MW	304 SS	3.5 ft ² 0.33 m ²	24 lbs 11 kg	7-00757A
FLF-6225U	300 psi @ 650°F 20 bar @ 343°C	4500 psi @ 1000°F 310 bar @ 537°C	316/316L SS 3/8" O.D. x 0.065"MW	304 SS	3.5 ft ² 0.33 m ²	24 lbs 11 kg	7-00763A
FLF-62B3	450 psi @ 650°F 31 bar @ 343°C	3400 psi @ 1100°F 234 bar @ 593°C	Alloy (Inconel®) 625 3/8" O.D. x 0.035"AW	304 SS	3.5 ft ² 0.33 m ²	24 lbs 11 kg	7-00632K
FLF-62B3U	300 psi @ 650°F 20 bar @ 343°C	3400 psi @ 1100°F 234 bar @ 593°C	Alloy (Inconel®) 625 3/8" O.D. x 0.035"AW	304 SS	3.5 ft ² 0.33 m ²	24 lbs 11 kg	7-00632L
FLF-64B3	150 psi @ 250°F 10 bar @ 121°C	3400 psi @ 1100°F 234 bar @ 593°C	Alloy (Inconel®) 625 3/8" O.D. x 0.035"AW	Cupronickel/ Alloy 400	3.5 ft ² 0.33 m ²	26 lbs 12 kg	7-00632M

NOTE:

- U in model number denotes ASME stamped model.
- Canadian Registration Number available for ASME stamped models only. Consult factory for CRN and other options and information.
- Vessels are exempt from CE marking per PED 97/23/EC. Vessels are below or equal to the limits set forth in Article 3, Sections 1.1, 1.2, 1.3 and Section 2 as applicable, and are designed and manufactured in accordance with sound engineering practice (meets the general requirements of the ASME Section VIII, Division 1, Boiler And Pressure Vessel Code). Nameplate will bear the name of Sentry Equipment Corp and safety instructions will be included per Article 3, Section 2.

WARNING

It is solely the responsibility of the end-user, through its own analysis and testing, to select products and materials suitable for their specific application requirements, ensure they are properly installed, safely applied, properly maintained, and limit their use to their intended purpose. Improper selection, installation, or use may result in personal injury or property damage.



SENTRY EQUIPMENT CORP

PO Box 127
Oconomowoc, WI 53066 USA
Phone: 262-567-7256
Fax: 262-567-4523

E-mail:
sales@sentry-equip.com

Website:
www.sentry-equip.com

QUALITY MANAGEMENT SYSTEM
CERTIFIED BY DNV
ISO 9001:2008

For further information, contact: