



Gas



Liquid & Slurry



Solid & Powder



Steam & Water

SENTRY TUBE-IN-TUBE DTC-6 Heat Exchangers

SAMPLE CONDITIONING

Do you have low flow rate and high temperature and/or high-pressure fluids that need control? The DTC Tube-in-Tube Heat Exchanger can help manage this through its spiral wound, counter flow design. Made to custom fit your application, the heat exchanger's base tube-in-tube design allows for reliability, efficiency, and minimal downtime through simplistic design and minimal operator intervention.

MODELS

DTC-CUA/CUB-6-1-1

DTC-SSC/CUB-6-1-1

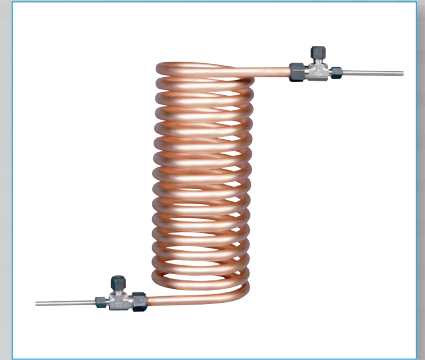
DTC-IN1/CUB-6-1-1

DTC-SSC/SSC-6-1-1

DTC-IN1/SSC-6-1-1

FEATURES

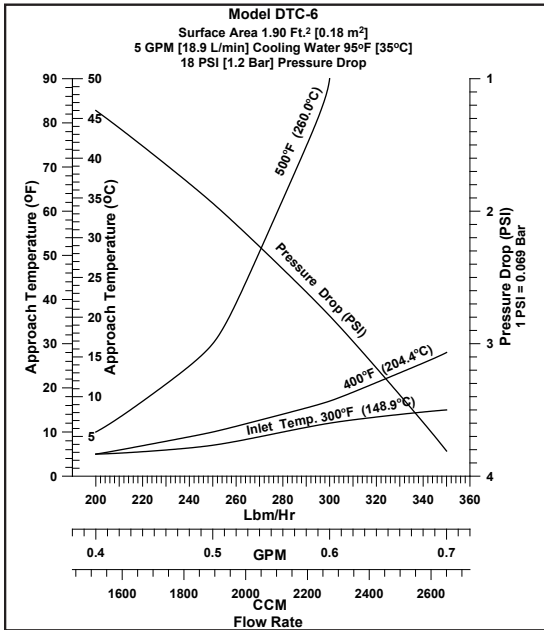
- The DTC Heat Exchanger has a constant fluid velocity, ensuring no dead spots or crevices.
- Making it easier to service, this heat exchanger comes with a completely drainable design.
- The product can be made with a variety of materials such as:
 - Stainless Steel
 - Copper
 - Nickle Alloys
 - Titanium
 - Zirconium



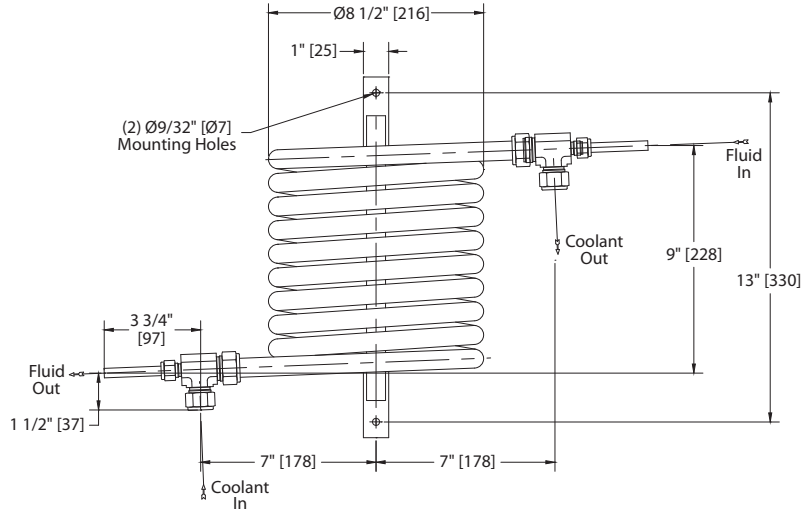
Sample. Monitor. Measure.

SENTRY

Any Application. Anywhere.



CONNECTIONS		
Tube	Size	Type
Inner	3/8" O.D.	plain tubing
Outer	5/8" O.D.	compression fitting



SPECIFICATIONS

models	inner tube design	outer tube design	inner tube material	outer tube material	h.t. area	weight
DTC-CUA/CUB-6-1-1	1250 psi at 300°F (86 bar at 148°C)	700 psi at 300°F (48 bar at 148°C)	3/8 in OD copper	3/4 in OD copper	1.90 ft ² (0.18 m ²)	16 lb (7.3 kg)
DTC-SSC/CUB-6-1-1	5100 psi at 1000°F (351 bar at 537°C)	700 psi at 300°F (48 bar at 148°C)	3/8 in OD 316SS	3/4 in OD copper	1.90 ft ² (0.18 m ²)	16 lb (7.3 kg)
DTC-IN1/CUB-6-1-1	3800 psi at 1100°F (262 bar at 593°C)	700 psi at 300°F (48 bar at 148°C)	3/8 in OD Alloy 625	3/4 in OD copper	1.90 ft ² (0.18 m ²)	16 lb (7.3 kg)
DTC-SSC/SSC-6-1-1	5100 psi at 1000°F (351 bar at 537°C)	2300 psi at 1000°F (158 bar at 537°C)	3/8 in OD 316SS	3/4 in OD 316SS	1.90 ft ² (0.18 m ²)	16 lb (7.3 kg)
DTC-IN1/SSC-6-1-1	3800 psi at 1100°F (262 bar at 593°C)	2300 psi at 1000°F (158 bar at 537°C)	3/8 in OD Alloy 625	3/4 in OD 316SS	1.90 ft ² (0.18 m ²)	16 lb (7.3 kg)

sentry-equip.com

966 Blue Ribbon Circle North, Oconomowoc, WI 53066 U.S.A. | +1-262-567-7256 | sales@sentry-equip.com



© 2017 Sentry Equipment Corp. All rights reserved. All product and company names are property of their respective owners. It is solely the responsibility of end users, through their own testing and analysis, to select products and materials suitable for their specific application requirements, ensure they are properly installed, safely applied and properly maintained, and to limit their use to their intended purpose. Improper selection, installation or use may result in personal injury or property damage.

S-SC&HE-SPS-00146-8 8-24

COMPANY WITH
 QUALITY SYSTEM
 CERTIFIED BY DNV GL
 = ISO 9001 =